



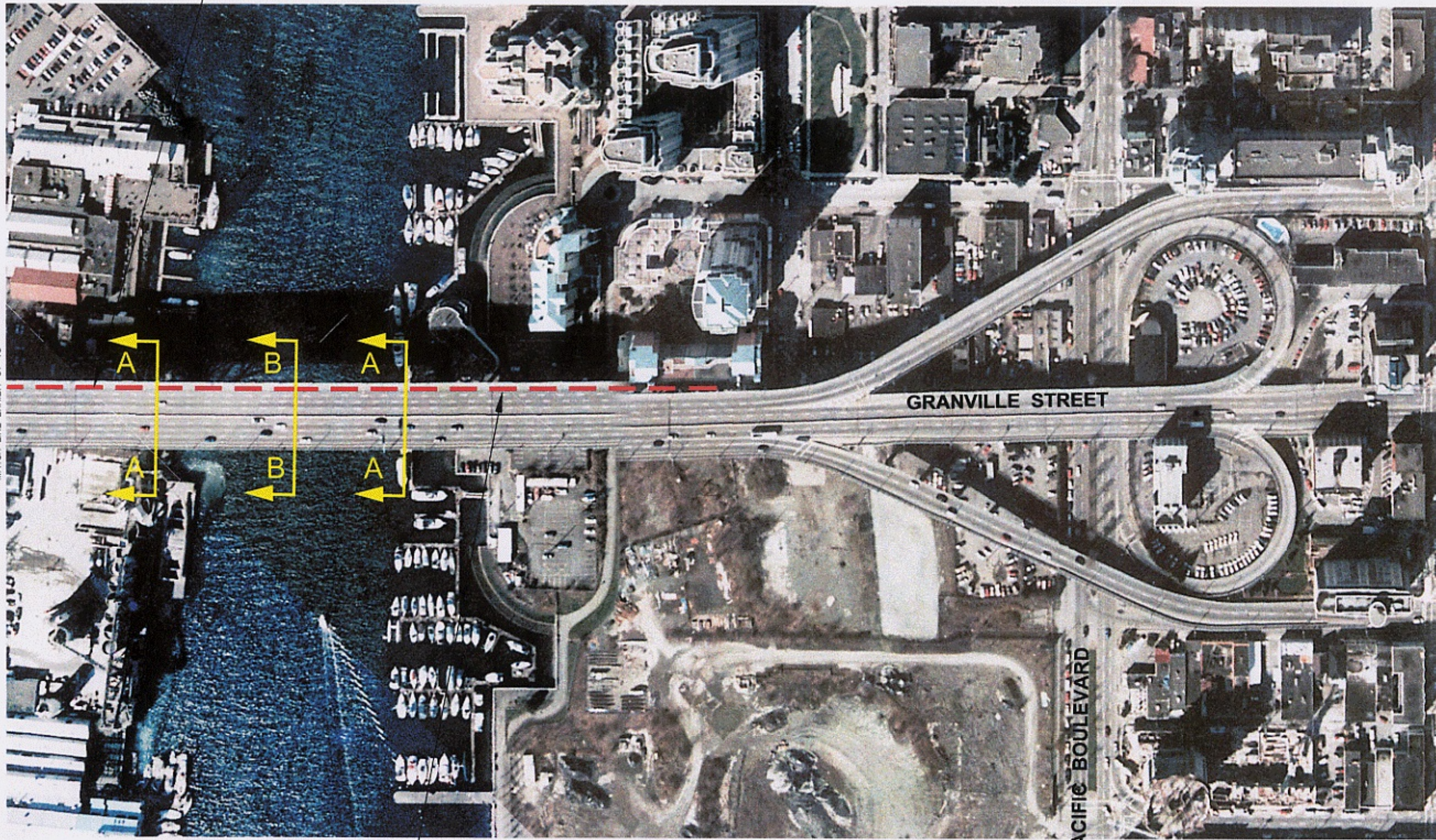
SUSPENDED
BENEATH

POSSIBLE
STAIRWAY/ELEVATOR
TO JOHNSTON STREET

MATCH LINE EXHIBIT G1-1b



MATCH LINE EXHIBIT G1-1a



SUSPENDED BENEATH

BEACH AVENUE

GRANVILLE STREET

PACIFIC BOULEVARD

POSSIBLE STAIRWAY/ELEVATOR TO SEA BREEZE WALK

SCALE 1:2,000
NOVEMBER 2001
SW1010

DELSCAN / IBI GROUP

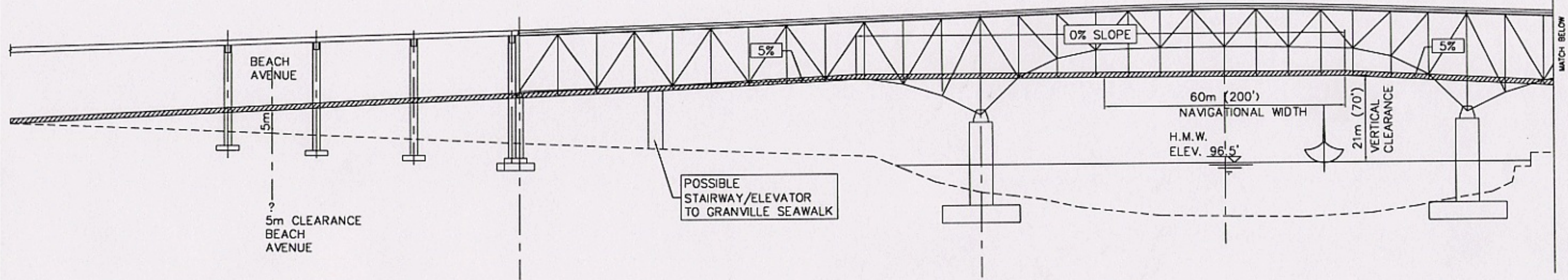
False Creek
Pedestrian & Cycling
Crossings Study

FALSE CREEK PEDESTRIAN/ CYCLIST CROSSINGS STUDY

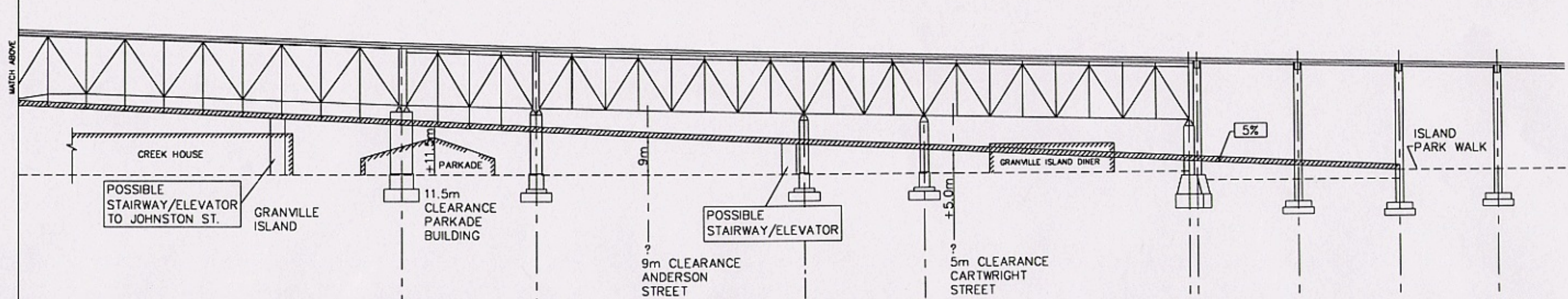
GRANVILLE BRIDGE
OPTION G1

EXHIBIT
G1-1b

NORTH SIDE



SOUTH SIDE



NOTE:
 THE GROUND PROFILE SHOWN ON THE PLANS MAY NOT REPRESENT ACTUAL CONDITIONS AS SOME SLIGHT VARIATIONS IN ELEVATIONS ON THE NORTH AND SOUTH SHORES HAVE BEEN NOTED. THEREFORE THE ACTUAL LOCATION OF THE RAMP LANDING POINTS AND SLOPES MAY BE AFFECTED SLIGHTLY.

FALSE CREEK PEDESTRIAN / CYCLIST CROSSINGS STUDY	EXHIBIT
GRANVILLE BRIDGE OPTION G1 - PROFILE	G1-3

11/20/01 11:33 H:\S\11010\Drawings\Granville\North_Side_Profile.dwg PLOT 1=1000
 11/20/01 11:33 H:\S\11010\Drawings\Granville\South_Side_Profile.dwg PLOT 1=1000