

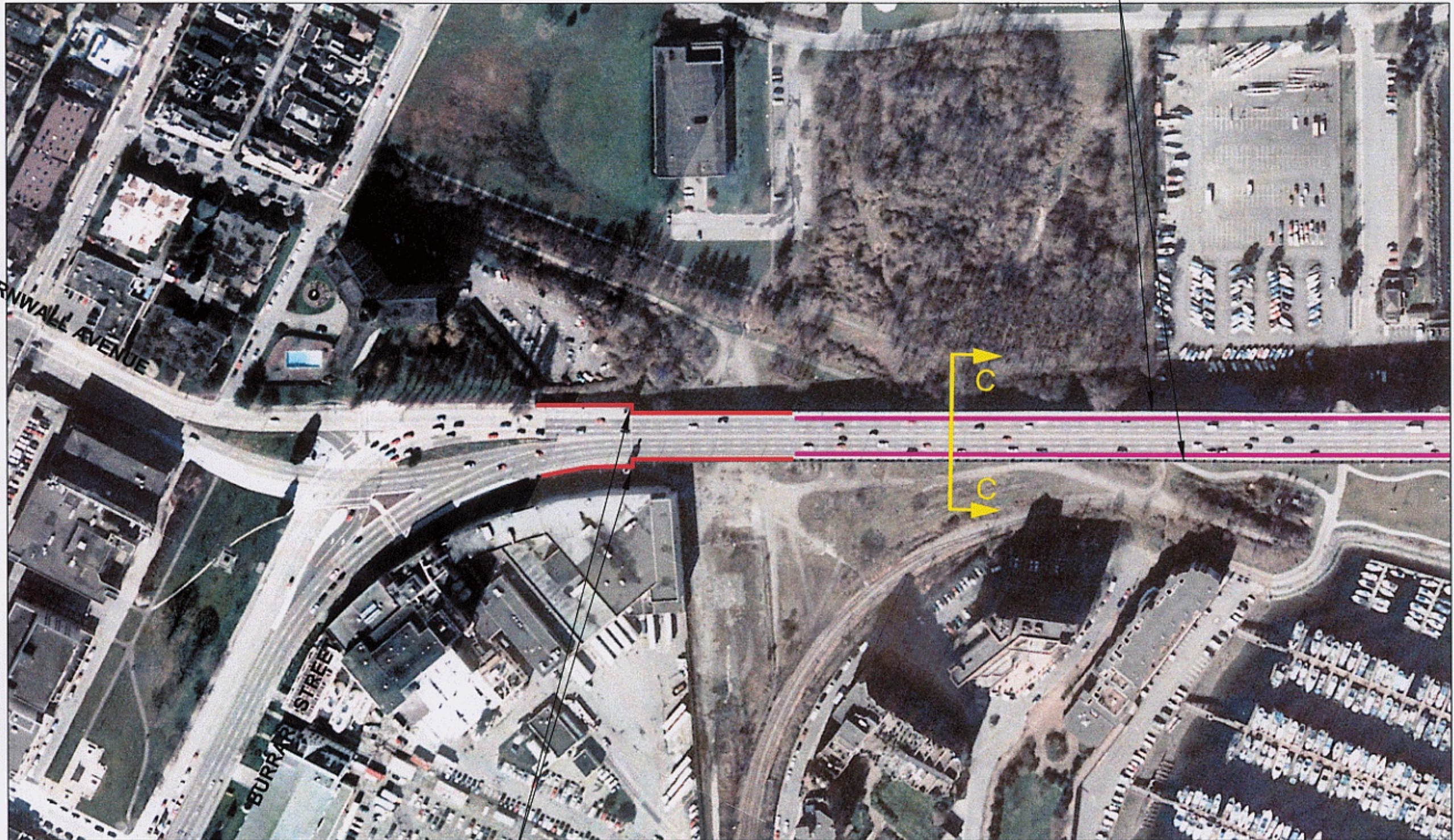


ACAD14 N:\SW\1010\SW1010\SWA\DWG\BARRARD\BARRARD-2000-1.DWG PLOT 1=2

CORNWALL AVENUE

BURRARD STREET

INSIDE
WIDENING



MATCH LINE EXHIBIT B2-1a

WIDEN OUTSIDE OF 'TORCHES'
(REQUIRED TO TRANSITION WITH
EXISTING 6 LANE CROSS SECTION)

SCALE 1:2,000
NOVEMBER 2001
SW1010



False Creek
Pedestrian & Cycling
Crossings Study

FALSE CREEK PEDESTRIAN/ CYCLIST CROSSINGS STUDY

BURRARD BRIDGE
OPTION B2

EXHIBIT
B2-1a

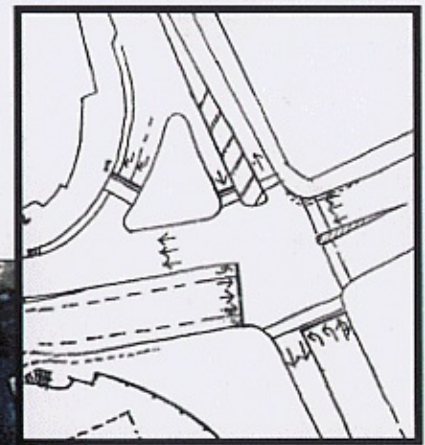


ACAD14 N:\SW\1010\SW1010\SW1010\DWG\BARRARD-BURRARD-2001-2.DWG PLOT 1-2

MATCH LINE EXHIBIT B2-1a

INSIDE
WIDENING

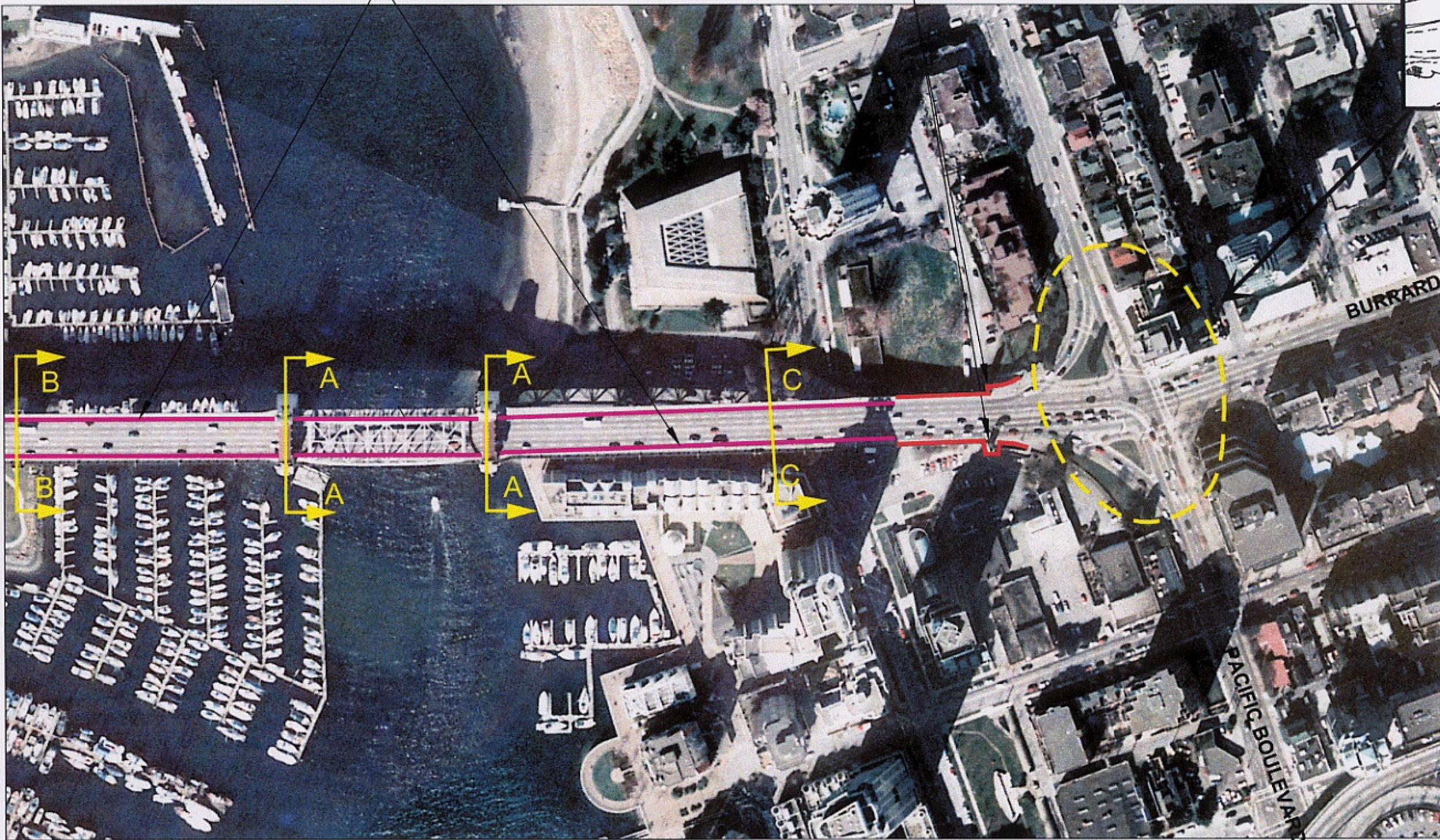
WIDEN OUTSIDE OF 'TORCHES'
(REQUIRED TO TRANSITION WITH
EXISTING 6 LANE CROSS SECTION)



POSSIBLE
INTERSECTION
LANING
RECONFIGURATION

BURRARD STREET

PACIFIC BOULEVARD



SCALE 1:2,000
NOVEMBER 2001
SW1010



False Creek
Pedestrian & Cycling
Crossings Study

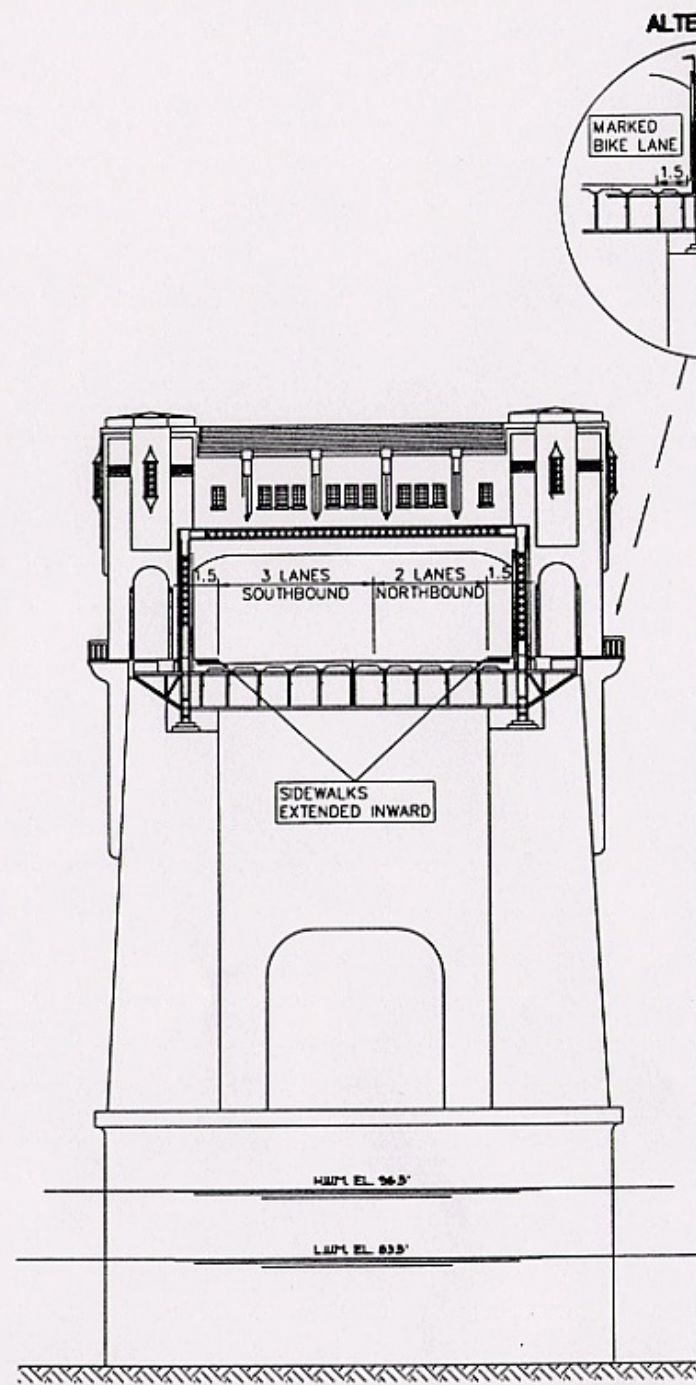
FALSE CREEK PEDESTRIAN/ CYCLIST CROSSINGS STUDY

**BURRARD BRIDGE
OPTION B2**

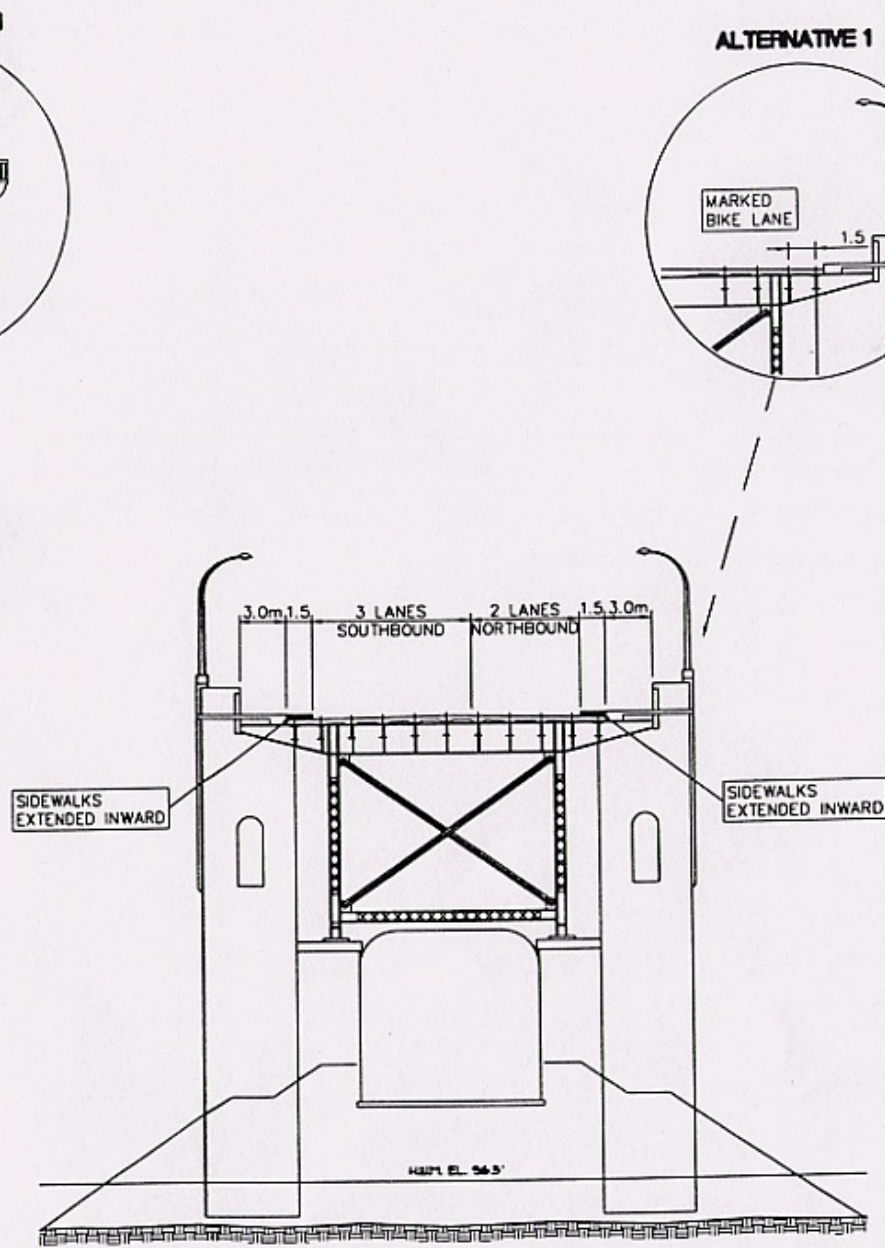
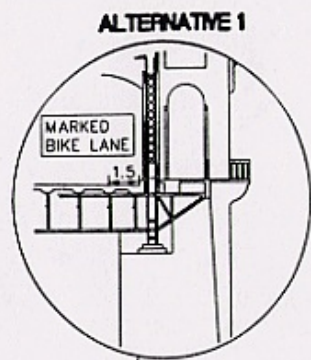
EXHIBIT

B2-1b

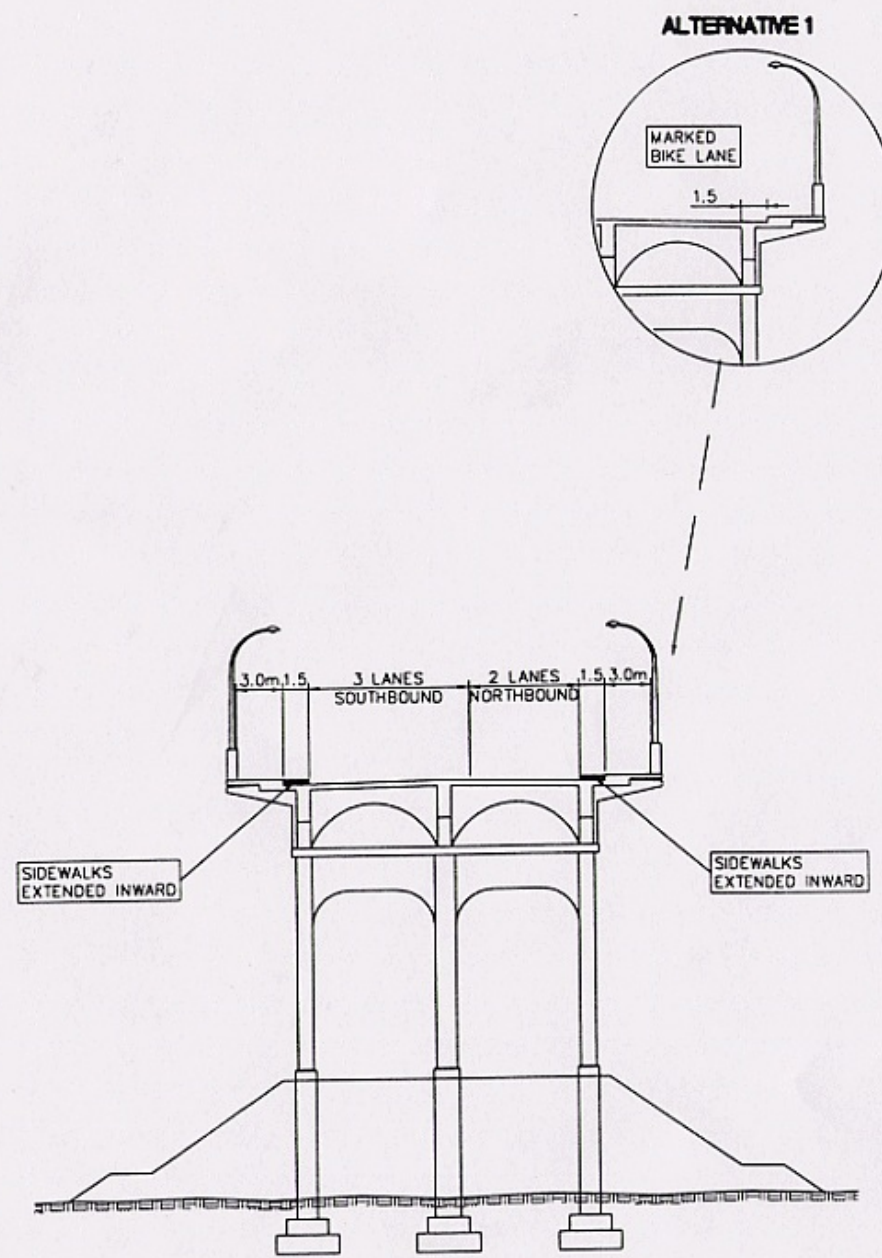
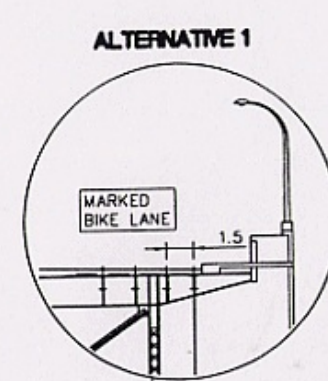
ACAD14 09/24/01 13.35 N:\SW\1010\SW1010\SWA\DWGS\BARRARD\OPTION_B2.DWG PLOT 1=0.4



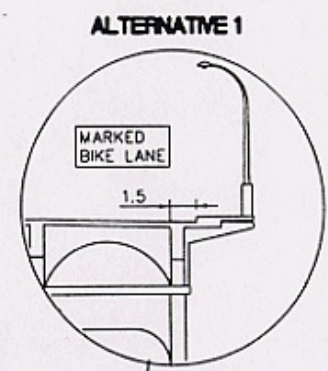
OPTION B2
SECTION A-A



OPTION B2
SECTION B-B



OPTION B2
SECTION C-C



SCALE 1:400
AUGUST 2001
SW1010

DELSCAN / IBI
GROUP

FALSE CREEK PEDESTRIAN/ CYCLIST CROSSINGS STUDY

BURRARD BRIDGE
OPTION B2 - CROSS SECTIONS

EXHIBIT

B2-2